

Structuring Bankable Climate Projects: An Investor's Playbook for Unlocking Regenerative Growth in Ecuador

Developed by : Juan Diego Villacis

Climate Finance and Investment Strategist

C°

Ambitious Climate Policy

Ecuador's robust national climate policy sets a clear path for sustainable development and investment.

🔑

Reformed Financial Framework

A modernized legal and financial architecture specifically designed to attract private investment is now in place.

P

Unlocking Regenerative Growth

This unique convergence presents a generational opportunity to channel significant domestic and international capital into innovative regenerative infrastructure projects, driving sustainable economic growth.



Executive Summary: A Generational Opportunity

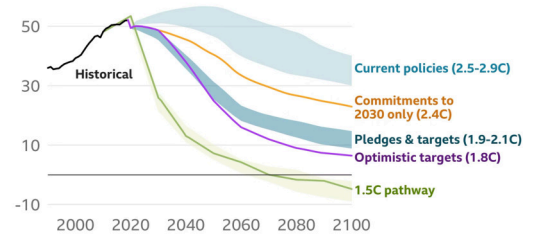
Ecuador's long-term vision, codified in the National Climate Change Mitigation Plan (PLANMICC), provides a clear, 50-year roadmap for decarbonization across five critical sectors: Energy, Agriculture, Land Use (LULUCF), Industrial Processes, and Waste.

This comprehensive strategy not only outlines ambitious targets but also establishes a foundational framework for climate action, signaling a strong governmental commitment to sustainable development and environmental stewardship. The PLANMICC's emphasis on a multi-sectoral approach ensures a holistic transformation, addressing both emissions reduction and adaptation needs critical for a resilient future.

This playbook is designed to serve as the definitive strategic manual for translating that national vision into a pipeline of bankable, investment-ready projects. Authored for a sophisticated audience of public sector officials, project developers, and institutional investors, this guide moves beyond policy summary to deliver actionable, innovative frameworks for project structuring and finance. It provides the crucial bridge between ambitious national goals and practical, investable opportunities, outlining methodologies for identifying, de-risking, and financing high-impact initiatives.

This unique alignment of strong policy, clear investment needs, and a supportive regulatory environment presents an unparalleled opportunity for unlocking significant private capital. It's a chance to participate in a foundational shift towards a green economy, yielding not only financial returns but also profound social and environmental benefits for generations to come.

Projected trends in emissions and warming
Global greenhouse gas emissions in gigatonnes of carbon dioxide equivalent



Source: Climate Action Tracker



Annual Investment Need:
USD 3.7 billion to meet climate goals (Source: PLANMICC Data)

Market Potential:
Emerging Green Bonds and Carbon Markets offer new avenues for innovative financing solutions.

Three Proprietary Frameworks for Success

The Regenerative Opportunity Matrix

A data-driven analytical tool that evaluates and prioritizes investment archetypes based on their alignment with Ecuadorian policy, market viability, climate impact, and scalability.

- Identifies "nexus" opportunities
- Evaluates policy alignment
- Assesses market viability

The Capital Stack Blueprint

A guide to advanced financial structuring that moves beyond generic models, detailing how to deploy outcome-based blended finance instruments.

- PLANMICC Performance Bonds
- Modernized PPP framework
- Natural capital monetization

The Social License Blueprint

A proactive risk mitigation framework that addresses community and Indigenous engagement through "Community Co-Ownership" models.

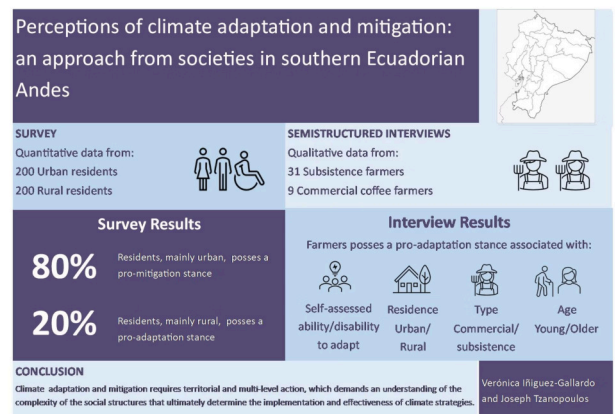
- Direct equity stakes for communities
- Aligned partnership structures
- Durable "social moat" creation



The Climate-Investment Nexus: From Policy to Roadmaps.

Ecuador's National Climate Change Mitigation Plan (PLANMICC), officially launched in 2024, serves as the cornerstone of the nation's ambitious environmental strategy. It meticulously outlines a "Climate Commitment 2070" scenario, targeting a profound **70% reduction** in annual greenhouse gas emissions by 2070 compared to a business-as-usual trajectory (Source: PLANMICC). This strategic, long-term vision not only provides unparalleled clarity and predictability for potential investors but also establishes a robust and credible framework specifically designed to channel significant domestic and international capital towards green initiatives.

The comprehensive nature of the plan, with its clear targets and actionable pathways, fundamentally de-risks climate-aligned investments by aligning them with national priorities and a stable regulatory environment.



Energy

Shift to renewables (hydro, solar, wind) and efficiency, enabling clean power and smart grids.

Agriculture

Focus on climate-smart farming, agroforestry, and efficient water use.

Land Use (LULUCF)

Emphasizes conservation, reforestation, and sustainable forest management, with natural capital potential.

Industrial Processes

Decarbonization through cleaner technologies, optimization, and circular economy principles.

Waste

Revolutionizing management with waste-to-energy, recycling, and landfill gas capture.

Aligning investment with these sectoral priorities ensures capital contributes to national climate goals while securing long-term, bankable returns. (All sectoral information is derived from the PLANMICC document.)

Investment Blueprint: PLANMICC Pathways to Bankable Archetypes

Translating the broad sectoral goals of PLANMICC into a concrete menu of investment opportunities is the first step in pipeline development.



Energy Sector

Key Archetypes: Utility-Scale Solar & Wind Generation, Distributed Generation & Microgrids, Green Hydrogen Pilots, Grid Modernization & Energy Storage



Transport Sector

Key Archetypes: Public Transport Electrification, National EV Charging Infrastructure Networks, Sustainable Logistics & Last-Mile Delivery



LULUCF Sector

Key Archetypes: Deforestation-Free Commodity Supply Chains, Large-Scale Reforestation & Afforestation, Bioeconomy Ventures



Waste & Industrial

Key Archetypes: Municipal Waste-to-Energy, Circular Economy Industrial Parks, Industrial Energy Efficiency & Fuel Switching

(All archetypes are derived from the PLANMICC document.)





The Regenerative Opportunity Matrix: Sector-by-Sector Analysis

Strategic capital allocation requires rigorous prioritization. The Regenerative Opportunity Matrix provides a quantitative scoring framework to evaluate investment archetypes against four weighted criteria.

1

Policy & Regulatory Alignment (30%)

Measures strength of enabling environment, including explicit mandates in new legislation and alignment with national targets.

2

Market & Financial Viability (30%)

Assesses commercial attractiveness, stable revenue streams, creditworthiness of offtakers, and potential return on investment.

3

Climate & Development Impact (20%)

Evaluates GHG emissions reduction potential, co-benefits like job creation, and alignment with Sustainable Development Goals.

4

Scalability & Paradigm Shift (20%)

Measures potential for transformative impact through replicability and introduction of new technologies or business models.

High-Potential Project Profiles: Top Scoring Opportunities

The Matrix reveals that the most compelling opportunities are "nexus" projects—those sitting at the intersection of multiple sectors with confluence of policy drivers.



Municipal Waste-to-Energy via Climate PPPs

Score: 4.7/5 - Rank #1

- Legal obligation for municipalities under new energy law
- Dual revenue streams: tipping fees + electricity sales
- State-backed financial guarantees available
- Highly replicable across all major cities



Sustainable Agroforestry for Deforestation-Free Supply Chains

Score: 4.25/5 - Rank #2

- Aligns with REDD+ strategy and EU regulations
- Premium prices + carbon/biodiversity credits
- High GHG mitigation and biodiversity benefits
- Scalable through cooperatives and technology



Utility-Scale Battery Energy Storage Systems (BESS)

Score: 4.1/5 - Rank #3

- Crucial for grid stability and renewable energy integration
- Enhances energy security and reduces reliance on fossil fuels
- Supported by national grid modernization plans
- Attracts significant private sector investment due to growing demand



Electrification of Public Transportation Networks

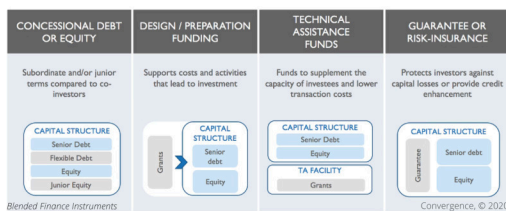
Score: 3.9/5 - Rank #4

- Reduces urban air pollution and GHG emissions
- Improves public health and quality of life in cities
- Incentives available for fleet conversion and charging infrastructure
- Significant potential for urban areas across Ecuador

The Capital Stack Blueprint: Advanced Financial Structuring

Attracting the necessary USD 3.7 billion in annual climate investment (Source: PLANMICC) requires moving beyond conventional project finance to innovative, context-specific models.

Blended Finance 2.0: Outcome-Based Instruments



Traditional blended finance uses public funds as first-loss cushion. Our "Blended Finance 2.0" approach ties concessionality directly to achievement of specific, measurable climate outcomes.

✔ **PLANMICC Performance Bond:** Interest rates tied to pre-agreed KPIs verified through national MRV system (Source: PLANMICC)

The Climate PPP Model

Ecuador has fundamentally overhauled its PPP framework through LOEEGE (Source: LOEEGE), creating the Secretariat of Public-Private Investments (SIPP) (Source: LOEEGE) and adopting the SOURCE platform with over **USD 7.5 billion** in projects listed (Source: SIPP / SOURCE Platform).

01

Project Origination

Align unsolicited proposals with Electricity Master Plan and PLANMICC goals

02

Bankable Structuring

Include legal stability clauses, state-backed guarantees, and direct lender agreements

03

SOURCE Platform Leverage

Use embedded evaluation criteria for strategic positioning and competitive advantage

De-Risking the Transition: Proactive Mitigation Framework

Legal Stability Clauses

New energy law (Source: LOEEGE) ensures tax and regulatory stability.

International Arbitration

ICSID and new PPP law (Source: LOEEGE) enable international arbitration.

Political Risk Insurance

MIGA and DFC offer coverage against political risks.

Regulatory Predictability

New PPP law (Source: LOEEGE) clarifies the project development framework.

Social License Blueprint

Our model proposes Community Co-Ownership & Benefit-Sharing Trusts (5-10% direct equity).

- **Reduced Social Friction:** Direct ownership aligns project success with community well-being.
- **Sustainable Development:** Profit-sharing fosters local economic development.
- **Enhanced Reputation:** Attracts impact investors.

Financial De-Risking Mechanisms

Robust financial mechanisms insulate projects from market and sovereign risks.

Currency Hedging

Dollarized economy minimizes risk; inflation indexation protects returns.

Public-Private Guarantees

New PPP law (Source: LOEEGE) enables sovereign and public bank guarantees.

MDB Involvement

IDB, CAF, and World Bank partnerships offer concessional financing.

The Investor's Gateway: International Climate Finance Alignment

Securing financing from premier institutions like GCF and IADB requires projects designed from inception to meet rigorous investment criteria as best-practice templates. Our approach integrates these requirements directly into project development, ensuring alignment and increasing bankability.

GCF Proposal Checklist

- **Impact Potential:** Quantify GHG reductions using RNCC methodologies, demonstrating significant climate benefits and scalability.
- **Paradigm Shift:** Leverage new legal frameworks for replicable models, fostering systemic change beyond individual projects.
- **Sustainable Development:** Implement Community Co-Ownership Trusts, ensuring tangible socio-economic benefits for local populations.
- **Country Ownership:** Secure NDA No-Objection Letter, verifying national alignment and prioritization of the project.
- **Efficiency:** Demonstrate private capital mobilization, showcasing the project's ability to attract and leverage diverse funding sources.

IADB Partnership Strategy

- **Strategic Alignment:** Frame within "Amazonia Forever" program, emphasizing regional integration and conservation goals.
- **Four Sustainability Dimensions:** Address Economic, Environmental, Social, and Institutional aspects for holistic project design.
- **Public-Private Synergy:** Leverage both IADB and IDB Invest windows, maximizing access to concessional and commercial finance.
- **Innovation & Technology:** Incorporate cutting-edge solutions for greater efficiency and impact.
- **Knowledge Sharing:** Promote best practices and lessons learned for broader regional application.

Strategic Nexus: Converging Requirements for Global Climate Finance

Beyond individual checklists, successful projects consistently demonstrate robust governance, transparent monitoring and evaluation (M&E) frameworks, and a clear path to long-term financial sustainability. These cross-cutting elements are critical for attracting and retaining support from international financial institutions.

The Path Forward to a Regenerative Ecuador

Ecuador possesses a rare combination of world-class natural capital, ambitious climate goals under PLANMICC (Source: PLANMICC), and a newly modernized legal architecture. Success requires coordinated effort from government, developers, and investors using this playbook as a shared strategic guide.

The tools are in place, the policy signals are clear, and the opportunity is immense. The time to build is now.